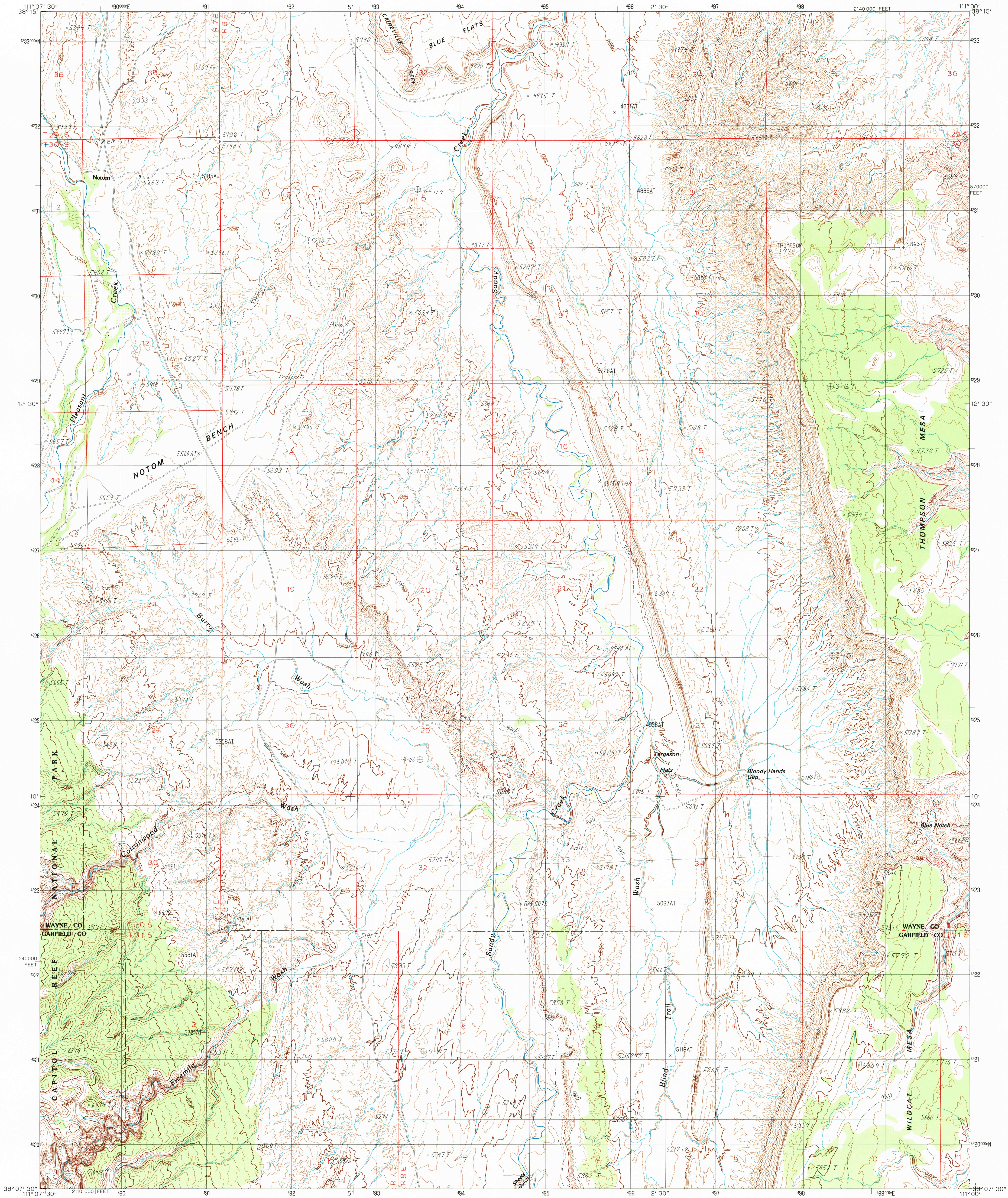


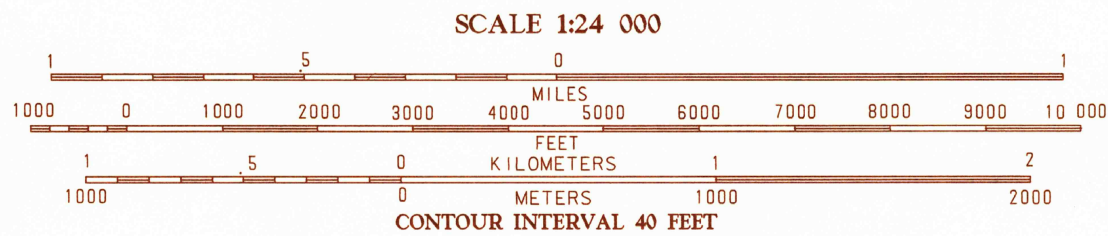
UNITED STATES
DEPARTMENT OF THE INTERIOR
GEOLOGICAL SURVEY

NOTOM QUADRANGLE
UTAH
7.5 MINUTE SERIES (TOPOGRAPHIC)



PRODUCED BY THE UNITED STATES GEOLOGICAL SURVEY
CONTROL BY U.S.G.S. NAD 83/NOAA
COMPILED FROM AERIAL PHOTOGRAPHS TAKEN 1981
FIELD CHECKED 1983 MAP EDITED 1987
PROJECTION LAMBERT CONFORMAL CONIC
GRID 100-METER UNIVERSAL TRANSVERSE MERCATOR
GRID 1000-FOOT STATE GRID TICS UTAH SOUTH ZONE
UTM GRID DECLINATION 0°02' WEST
1987 MAGNETIC NORTH DECLINATION 13°30' EAST
VERTICAL DATUM NATIONAL GEODETIC VERTICAL DATUM OF 1959
HORIZONTAL DATUM 1927 NORTH AMERICAN DATUM
To place on the predicted North American Datum of 1983,
move the projection lines as shown by dashed corner ticks
(6 meters north and 64 meters east)
There may be private inholdings within the boundaries of any
Federal and State Reservations shown on this map
Where omitted, land lines have not been established
All marginal data and lettering generated and positioned by
automated type placement procedures
No distinction made between houses, barns, and other buildings

PROVISIONAL MAP
Produced from original
manuscript drawings. Infor-
mation shown as of date of
photography.



UTAH			QUADRANGLE LOCATION
1	2	3	
4	5	6	ADJOINING 7.5' QUADRANGLE NAMES
7	8	9	

ROAD LEGEND
Improved Road
Unimproved Road
Trail
Interstate Route
U.S. Route
State Route

NOTOM, UTAH
PROVISIONAL EDITION 1987

3811-B1-TF-024

